



# TECHNICAL TRAINING



**ELGIN**

**VACTOR**

**GUZZLER**  
Subsidiary of Federal Signal Corporation

 **TRUVAC**





## Technical Training Choices

ESG Technical Training classes are complimentary for all attendees. Training dates will be added regularly. Watch our registration site, <https://www.eventbrite.com/o/esg-technical-training-2850048659> for training offerings and dates. Dates may be added through the year, so check back often.

In-Person training classes will be offered at Elgin Sweeper and Vactor Manufacturing. This will include Standard level classes and the Advanced level classes.

Standard level classes are open to everyone. The Advanced level classes require having previously attended a Standard level class on a specific product. These prerequisites are required to ensure that advanced technicians have the chance to learn with other advanced technicians in an environment where the basic repairs are already understood. This allows all the class time to be devoted to advanced information and training. Registration for each person at the In-Person training is required.

Register at <https://www.eventbrite.com/o/esg-technical-training-2850048659>

### Note:

- ESG Technical Training reserves the right to cancel classes 4 weeks prior to the start of a class if there is insufficient enrollment. Additional classes will be offered when possible if classes fill early.
- If a student cannot attend, notify ESG Technical Training at [csr@fsdepot.com](mailto:csr@fsdepot.com) a minimum of one week before the scheduled class start date. Many classes have a waiting list so with sufficient cancellation notice, other potential attendees will have the chance to enroll.



## Training Information

### Class Offerings:

- Pelican Sweepers for Mechanics (3 days)
- Four-wheel Mechanical Sweepers for Mechanics (3 days)
- Broom Badger Sweepers for Mechanics (2 days)
- Vacuum Sweepers for Mechanics (3 days)
- Crosswind Sweepers for Mechanics (2 days)
- RegenX Sweepers for Mechanics (3 days)
- Advanced Service Tool Diagnostics – Vansco Systems (3 days)
- Advanced Service Tool Diagnostics – Pelican Danfoss Systems (3 days)
- Advanced Service Tool Diagnostics – Broom Badger Danfoss Systems (3 days)
- Advanced Single Engine Air Sweeper Repair and Diagnostics (3 days)

All In-Person classes at Elgin Sweeper start on Tuesday and attendance is 8:30 – 4:00 each day. Training consists of classroom and hands-on instruction. Training manuals are provided. Standard class size is limited to 15 in order to ensure individualized instruction. Advanced class size is limited to 10.

While there is no charge for Elgin Sweeper training, registration is required. Registration is available online at:

<https://www.eventbrite.com/o/esg-technical-training-2850048659>

Dress: Casual work clothes, safety toe shoes, and safety glasses with side shields. (shoe covers will be supplied if needed)

In-Person classes include lunch each day, refreshments in the classroom, and training material. Please notify us of any dietary restrictions. Transportation, lodging, and meals outside the class time are not included.

**Location: Elgin Sweeper Co.**  
**1300 W. Bartlett Road**  
**Elgin, IL 60120**

### Recommended Hotels: (Call for reservations and availability of Elgin Sweeper rates)

Holiday Inn Express Chicago West/St. Charles  
155 38th Avenue, St. Charles, IL 60174  
(630) 587-6564  
[Holiday Inn Express Chicago West/St. Charles](#)

Hampton Inn Chicago/St. Charles  
2875 Foxfield Rd, St Charles, IL 60174  
(630) 584-0222  
[Hampton Inn Chicago/St. Charles](#)

Marriott Courtyard Chicago/St. Charles (Shuttle Available)  
700 Courtyard Dr, St Charles, IL 60174  
(630) 377-6370  
[Marriott Courtyard Chicago/St. Charles](#)

### **Class Offerings:**

- Vector 2100i for Operators (2 days)
- Vector 2100i for Mechanics (3 days)
- TRUVAC HXX for Operators & Mechanics (3 days)
- Guzzler CL E for Mechanics (2 days)
- Advanced 2100i Electronic Troubleshooting (3 days)

All In-Person classes at Vector Manufacturing are 8:30 – 4:00 each day. Training consists of classroom and hands-on instruction. Training manuals are provided. Standard class size is limited to 15 in order to ensure individualized instruction. Advanced class size is limited to 10.

While there is no charge for this training, registration is required. Registration is available online at:

<https://www.eventbrite.com/o/esg-technical-training-2850048659>

Dress: Casual work clothes, safety toe shoes, and safety glasses with side shields (shoe covers will be supplied if needed)

In-Person classes include lunch each day, refreshments in the classroom, and training material. Please notify us of any dietary restrictions. Transportation, lodging, and meals outside the class time are not included.

**Location: Vector Manufacturing**  
**1621 S. Illinois St.**  
**Streator, IL 61364**

### **Recommended Hotels: (Call for reservations and availability of Vector rates)**

Holiday Inn Express & Suites  
2850 Columbus St., Ottawa, IL 61350  
(815) 320-2230  
[Holiday Inn Express & Suites - Ottawa](#)

Hampton Inn (discount rate code L-T2C)  
4115 Holiday Lane, Ottawa, IL, 61350  
815-434-6040  
[Hampton Inn - Ottawa](#)

Fairfield Inn & Suites (Discount rate code TZKD)  
3000 Fairfield Lane, Ottawa, IL 61350  
844-631-0595  
[Fairfield Inn & Suites - Ottawa](#)

Comfort Inn (mention Vector for discount)  
20 W Stevenson Rd, Ottawa IL 61350  
855-571-3205  
[Comfort Inn - Ottawa](#)

Hampton Inn Pontiac  
2000 Grand Prix Drive, Pontiac, IL 61764  
(833) 307-1179  
[Hampton Inn - Pontiac](#)



# TRAINER BIOGRAPHIES



## Elgin Sweeper

Juan Carlos Garcia is the Technical Training Instructor for Elgin Sweeper products. He has over 6 years of experience working with hydraulics, electrical and most importantly, Elgin sweepers. Juan joined Elgin Sweeper in 2018 as part of the 4-wheel sweeper assembly line. He progressed to master assembler in just a year. As a master assembler, he learned the programming and functionality of the sweepers. In 2020, Juan left Elgin to join a heavy equipment company that specialized in making horizontal drilling rigs. There he worked side-by-side with engineers learning hydraulics and helping design the lay out for the hydraulic components. After some time, Juan left that company and started working as a service technician for an Elgin/Vactor sweeper dealer where he was able to work on multiple units, including older model units. In a year and a half, he progressed from apprentice to Journeyman technician. As a journeyman technician, he was given various opportunities such as demonstrating machines, interfacing with customers, and teaching operator classes. Juan is implementing everything he has learned as a

technician into the classes he teaches.

Juan works closely with the service department, engineering department, and technical publications to further advance technical training at Elgin Sweeper.

Juan is an Elgin native. He likes to spend his free time working on small electronics ranging from phone and laptop repairs to making custom portable speakers.



## Vactor Manufacturing

Jerry Smith is a Technical Training Instructor for Vactor Manufacturing. He has over 35 years experience in repair, service, maintenance, inspection, troubleshooting, and training in the automotive and vacuum truck fields. He joined Vactor in March of 2008 as a quick repair technician. Along with inspecting, testing and repairing the Vactor trucks, Jerry has also created repair and testing documents that are used in Vactor's service department.

Before coming to Vactor Jerry was a General Motors and Saab technician for 20 years, specializing in electrical diagnosis and repair. Along with inspecting, maintenance, diagnosing and repairs, he provided training to other General Motors technicians through General Motors. While working as a General Motors and Saab technician Jerry attained ASE Master Auto Technician and L1 Advanced Engine Performance certification. He also attained General Motors Master Technician certification, and was a Saab certified technician.



**JERRY SMITH**

Jerry is assigned to the Vactor Manufacturing facility where he has access to the Engineering department, Technical Publications, and Service to assist with the development of all Vactor training.

Jerry resides in Streator Illinois. And since Jerry has run over 40 marathons and has more than 25 thousand miles on his bicycle over the last 10 years, you may find him training for his next race, triathlon, or Ironman when he is not working.



## Vector Manufacturing

Matthew Donahue is a technical trainer for Vector Manufacturing. He has over 10 years experience in service, repair, and maintenance in the automotive field. Matthew joined Vector in 2019 as part of the TRUVAC assembly line, starting off as an assembler before becoming a crew leader. While in assembly, Matt taught many new employees the protocols and steps to build the various TRUVAC models. Working as a crew leader in assembly, he worked closely with production to make sure trucks were shipped out on time and met Vector's high level of quality.

Prior to working at Vector, Matt was an automotive technician at a Dodge dealership for two years before leaving to help his family open their own automotive repair business. While there he achieved ASE certification. While working in an independent repair shop, Matt adapted to the new landscape of working on various makes and models. As he continued to improve his own knowledge base, Matt also strived to teach fellow technicians the proper procedures to diagnose, maintain, and repair a vast array of vehicles.

Matthew is a native of Streator. An avid fan of the outdoors, you can usually find him hiking the trails at Starved Rock State Park. While slightly removed from the automotive world. He continues to work on and modify his own cars.



**MATTHEW  
DONAHUE**

# Pelican Sweepers for Mechanics

## Objectives:

This three day class is designed to help mechanics set, maintain, and repair the Pelican sweeper for the best operation. Setting of brooms and conveyors will be discussed with emphasis on safety, proper operation, maintenance, and repair.



Technicians will learn troubleshooting of electrical, electronic, and hydraulic systems related to sweeping functions. Hydrostatic drives and hubs will also be reviewed for troubleshooting and repair. Sweepers discussed will include the Pelican NP and Waterless Pelican (NR).

- Safety
- Sweeper Operation from the Mechanic's Point of View
- Operating Parameters
- Main and Side Broom Settings and Operation
- Conveyor Systems – Settings, Operation, Maintenance, and Repair
- Operating and Emptying the Hopper
- Water Pumps and Spray Nozzles
- Waterless Sweeper Components and Operation
- Maintenance of the Sweeper – Maintenance Schedule
- Electrical Systems
- Electronic Controls and the Electronic Service Tools
- Hydraulics and Hydrostatic Drive System
- Hubs and Brakes
- Troubleshooting Pelican systems
- Power Systems and After-Treatment, Diesel and CNG

**This class meets Tuesday through Thursday at 8:30 AM to 4:00 PM. Attendance at the entire session is required.**

Who should attend: New and experienced maintenance personnel and mechanics who want a better understanding of the Elgin Pelican sweeper.

See <https://www.eventbrite.com/o/esg-technical-training-2850048659> for current dates



# Four-Wheel Mechanical Sweepers for Mechanics

## Objectives:

This three day class is designed to help mechanics set, maintain, and repair the four-wheel mechanical sweeper for the best operation. Setting of brooms, elevators, and conveyors will be discussed with emphasis on safety, proper operation, maintenance, and repair.

Class will include troubleshooting of electrical, pneumatic, and hydraulic systems related to sweeping functions. Sweepers discussed will include the 4M Broom Bear, 4M Road Wizard, and 4M Eagle.



- Safety
- Sweeper Operation from the Mechanic's Point of View
- Operating Parameters
- Main and Side Broom Settings and Operation
- Conveyor Systems – Settings, Operation, Maintenance, and Repair
- Elevator Systems – Settings, Operation, Maintenance, and Repair
- Operating and Emptying the Hopper
- Water Pumps and Spray Nozzles
- Maintenance of the Sweeper – Maintenance Schedule
- Hydraulic System
- Pneumatic System
- Electrical System
- Electronics and the Electronic Service Tool
- Troubleshooting all sweeper systems
- Power Systems, Diesel and CNG

**This class meets Tuesday through Thursday at 8:30 AM to 4:00 PM. Attendance at the entire session is required.**

Who should attend: New and experienced maintenance personnel and mechanics who want a better understanding of the Elgin mechanical sweeper line.

See <https://www.eventbrite.com/o/esg-technical-training-2850048659> for current dates

# Broom Badger Sweepers for Mechanics

## Objectives:

This two day class is designed to help mechanics set, maintain, and repair the Broom Badger sweeper for the best operation. Setting of brooms and elevators will be discussed with emphasis on safety, proper operation, maintenance, and repair.



Class will include troubleshooting of electrical, hydraulic, and electronic systems related to sweeping functions.

- Safety
- Sweeper Operation from the Mechanic's Point of View
- Operating Parameters
- Main and Side Broom Settings and Operation
- Elevator Systems – Settings, Operation, Maintenance, and Repair
- Operating and Emptying the Hopper
- Water Pumps and Spray Nozzles
- Maintenance of the Sweeper – Maintenance Schedule
- Hydraulic System
- Pneumatic Suspension
- Electrical System
- Electronic System and Service Tool
- Troubleshooting all sweeper systems
- Power Systems and After-Treatment

**This class meets Tuesday and Wednesday at 8:30 AM to 4:00 PM. Attendance at the entire session is required.**

Who should attend: New and experienced maintenance personnel and mechanics who want a better understanding of the Elgin Broom Badger sweeper.

See <https://www.eventbrite.com/o/esg-technical-training-2850048659> for current dates



# Vacuum Sweepers for Mechanics

## Objectives:

This three day class is designed to help mechanics set and maintain the Whirlwind, Whirlwind1, and Megawind sweeper for the best operation. Setting of brooms and nozzles will be discussed with emphasis on safety, proper operation, maintenance, and repair.



Technicians will learn troubleshooting of electrical, pneumatic, and hydraulic systems related to sweeping functions. We will discuss use of and troubleshooting of the wandering hose and high pressure wash system.

Sweepers discussed will be the Whirlwind, Whirlwind1, and Megawind.

- Safety
- Vacuum Sweepers – identifying main components
- Sweeper Operation from the mechanic's point of view
- Setting and Operating the Side and Center Brooms
- Setting and Operating the Suction Nozzle(s)
- Impellers, Air System operation, impeller replacement, drive systems, and repair
- Maintenance and Maintenance Schedule
- Hydraulic System
- Pneumatic System
- Electrical Systems
- Electronics and the Electronic Service Tool
- Water pumps and spray nozzles
- Operating the Wandering Hose and High Pressure Wash System
- Troubleshooting all sweeper systems
- Operating and emptying the Hopper
- Shared Power system
- Power Systems - Diesel engines and the Variable Power Divider

**This class meets Tuesday through Thursday at 8:30 AM to 4:00 PM. Attendance at the entire session is required.**

Who should attend: New and experienced maintenance personnel and mechanics who want a better understanding of the Elgin vacuum sweeper line.

See <https://www.eventbrite.com/o/esg-technical-training-2850048659> for current dates

# Crosswind Sweepers For Mechanics

## Objectives:

This three day class is designed to help mechanics set and maintain the Crosswind sweeper for the best operation. Setting of brooms and pickup heads will be discussed with emphasis on safety, proper operation, maintenance, and repair.



Technicians will learn troubleshooting of electrical, pneumatic, and hydraulic systems related to sweeping functions. We will discuss use of and troubleshooting of the wandering hose and high pressure wash system.

Sweepers discussed will include the Elgin Crosswind and the Elgin Crosswind1.

- Safety
- Regenerative Air Sweepers – Identifying main components
- Sweeper Operation from the mechanic's point of view
- Setting and Operating the Side and Pickup Head Brooms
- Setting and Operating the Pickup Head
- Impellers - Air System operation, impeller replacement, drive systems, and repair
- Maintenance and Maintenance Schedule
- Hydraulic System
- Pneumatic System
- Electrical Systems
- Electronics and the Electronic Service Tool
- Water pumps and spray nozzles
- Operating the Wandering Hose and High Pressure Wash System
- Troubleshooting all sweeper systems
- Operating and emptying the Hopper
- Shared Power system
- Power Systems – Diesel, CNG, and the Variable Power Divider

**This class meets Tuesday through Thursday at 8:30 AM to 4:00 PM. Attendance at the entire session is required.**

Who should attend: New and experienced maintenance personnel and mechanics who want a better understanding of the Elgin Crosswind or Elgin Crosswind1.

See <https://www.eventbrite.com/o/esg-technical-training-2850048659> for current dates



# RegenX Sweepers For Mechanics

## Objectives:

This two day class is designed to help mechanics set and maintain the RegenX sweeper for the best operation. Setting of brooms and pickup heads will be discussed with emphasis on safety, proper operation, maintenance, and repair.



Technicians will learn troubleshooting of electrical, pneumatic, and hydraulic systems related to sweeping functions. We will discuss the use of and troubleshooting of the wandering hose and high pressure wash system.

Sweepers discussed will include the Elgin RegenX and Elgin RegenX1.

- Safety
- Regenerative Air Sweepers – Identifying main components
- Sweeper Operation from the mechanic's point of view
- Setting and Operating the Side Brooms
- Setting and Operating the Pickup Head
- Impellers - Air System operation, impeller replacement, drive systems, and repair
- Maintenance and Maintenance Schedule
- Hydraulic System
- Pneumatic System
- Electrical Systems
- Water pumps and spray nozzles
- Troubleshooting all sweeper systems
- Operating the Wandering hose and High Pressure wash systems
- Operating and emptying the Hopper
- Power Systems - Diesel engine and Variable Power Divider

**This class meets Tuesday and Wednesday at 8:30 AM to 4:00 PM. Attendance at the entire session is required.**

Who should attend: New and experienced maintenance personnel and mechanics who want a better understanding of the Elgin RegenX or Elgin RegenX1.

See <https://www.eventbrite.com/o/esg-technical-training-2850048659> for current dates



## Advanced Service Tool Diagnostics – Vansco Systems (Recommended Prerequisite – See Below)



### Objectives:

This three day class is designed to help the Technician diagnose issues on any Elgin product using electrical diagnosis and the Elgin Service Tool (Vansco System). Time will be spent in the classroom and lab. Hands-on modules will give your technicians experience that will help them solve problems back at their shops. Your technician will receive in-depth training with the service tool. This class will cover all Elgin products with Vansco electronic systems.

**Each technician must bring a laptop with the Elgin service tool installed.** Class starts Tuesday with checking the technician's computers and ensuring the service tool functions and is up-to-date (required). The technician will be required to connect to a sweeper and use the tool.

- Diagnostic Procedure
- Electrical Systems – Reading and applying schematics
- Electrical System diagnosis and repair
- Electronic Service Tool – Vansco
- Hands-on labs for Electrical and Electronic systems
- Information systems for Elgin Technicians

**This class meets Tuesday through Thursday at 8:30 AM to 4:00 PM. Attendance at the entire session is required.**

Who should attend: Technicians wanting to improve their ability to use the Elgin Service Tool and troubleshoot issues on all Elgin products with Vansco systems.

### Prerequisites:

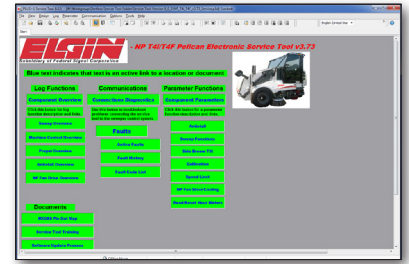
We recommend Technicians complete a standard class within the last 3 years on Four-Wheel Mechanical Sweepers, Crosswind Sweepers, or Vacuum Sweepers before attending.

Note: This class will only be offered as in-person training at Elgin Sweeper.

See <https://www.eventbrite.com/o/esg-technical-training-2850048659> for current dates



## Advanced Service Tool Diagnostics – Pelican Danfoss Systems (Recommended Prerequisite – See Below)



### Objectives:

This three day class is designed to help the Technician diagnose issues on the Elgin Pelican using electrical diagnosis and the Elgin Service Tool (Danfoss System). Time will be spent in the classroom and lab. Hands-on modules will give your technicians experience that will help them solve problems back at their shops. Your technician will receive in-depth training with the service tool. This class will cover the Danfoss system in the current Pelican.

**Each technician must bring a laptop with the Elgin Danfoss service tool installed.** Class starts Tuesday with checking the technician's computers and ensuring the service tool functions and is up-to-date (required). The technician will be required to connect to a sweeper and use the tool.

- Diagnostic Procedure
- Electrical Systems – Reading and applying schematics
- Electrical System diagnosis and repair
- Electronic Service Tool – Danfoss
- Hands-on labs for Electrical and Electronic systems
- Information systems for Elgin Technicians

**This class meets Tuesday through Thursday at 8:30 AM to 4:00 PM. Attendance at the entire session is required.**

Who should attend: Technicians wanting to improve their ability to use the Elgin Service Tool and troubleshoot issues on Elgin Pelicans with Danfoss systems.

### Prerequisites:

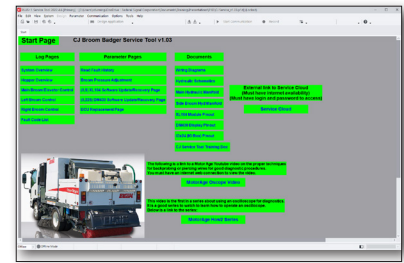
We recommend Technicians complete the standard Pelican Sweepers for Mechanics class within the last 3 years before attending.

Note: This class will only be offered as in-person training at Elgin Sweeper.

See <https://www.eventbrite.com/o/esg-technical-training-2850048659> for current dates



## Advanced Service Tool Diagnostics – Broom Badger Danfoss Systems (Recommended Prerequisite – See Below)



### Objectives:

This three day class is designed to help the Technician diagnose issues on the Elgin Broom Badger using electrical diagnosis and the Elgin Service Tool (Danfoss System). Time will be spent in the classroom and lab. Hands-on modules will give your technicians experience that will help them solve problems back at their shops. Your technician will receive in-depth training with the service tool. This class will cover the Danfoss system in the current Broom Badger.

**Each technician must bring a laptop with the Elgin Danfoss service tool installed.** Class starts Tuesday with checking the technician's computers and ensuring the service tool functions and is up-to-date (required). The technician will be required to connect to a sweeper and use the tool.

- Diagnostic Procedure
- Electrical Systems – Reading and applying schematics
- Electrical System diagnosis and repair
- Electronic Service Tool – Danfoss
- Hands-on labs for Electrical and Electronic systems
- Information systems for Elgin Technicians

**This class meets Tuesday through Thursday at 8:30 AM to 4:00 PM. Attendance at the entire session is required.**

Who should attend: Technicians wanting to improve their ability to use the Elgin Service Tool and troubleshoot issues on Elgin Broom Badgers with Danfoss systems.

### Prerequisites:

We recommend Technicians complete the standard Broom Badger Sweepers for Mechanics class within the last 3 years before attending.

Note: This class will only be offered as in-person training at Elgin Sweeper.

See <https://www.eventbrite.com/o/esg-technical-training-2850048659> for current dates

## Advanced Single Engine Air Sweeper Repair and Diagnosis (Recommended Prerequisite – See Below)

### Objectives:

Building on the Crosswind Sweepers for Mechanics, Vacuum Sweepers for Mechanics, and RegenX Sweepers for Mechanics training, this three day class is designed to prepare the technician for work on the single engine air sweeper. Time will be spent in the classroom and lab. Hands-on modules will give your technicians experience that will help them solve problems back at their shops.



**Each technician should bring a laptop** so they can install the BODAS service tool for the VPD system.

- Variable Power Divider – Operation, R&R, and Diagnostic Procedure
- Electrical Systems – Reading and applying schematics
- Electrical System diagnosis and repair
- Electronic Service Tool – BODAS tool for VPD system
- Hands-on labs for Electrical and Electronic systems
- Information systems for Elgin Technicians

**This class meets Tuesday through Thursday at 8:30 AM to 4:00 PM. Attendance at the entire session is required.**

Who should attend: Technicians expecting to work on the Crosswind1, Whirlwind1, or RegenX1.

### Prerequisites:

We recommend Technicians complete the standard Crosswind Sweepers for Mechanics, Vacuum Sweepers for Mechanics, or RegenX Sweepers for Mechanics class within the last 3 years before attending.

Note: This class will only be offered as in-person training at Elgin Sweeper.

See <https://www.eventbrite.com/o/esg-technical-training-2850048659> for current dates.



## Vactor 2100i for Operators

### Objectives:

This two day class is designed to help operators and new mechanics set up and maintain the Vactor 2100i for the best operation. Engaging the hydraulics, rodder pump and vacuum systems (fan and PD units) will be discussed with emphasis on safety, industry standards and best practices, proper operation, and maintenance.



Class will include basic operation of systems related to sewer cleaning including the boom and high pressure water system. Discussion will include how to set the Vactor unit up for various applications.

- Safety
- Pre-Trip Inspections
- Understand the Hose Reel, Rodder Pump, Vacuum source (Fan or P.D.), Body, and Boom Functions
- Nozzle Selection and Operation
- Filtration and Vacuum Systems
- Maintenance and the Maintenance Schedule
- Component Identification
- Navigation of the Intuitouch Screens

**This In-Person class meets two days, 8:30 - 4:00. Attendance at the entire session is required.**

Who should attend: New and experienced operators, new mechanics, supervisory or demonstration personnel who want a better understanding of the Vactor 2100i operations

See <https://www.eventbrite.com/o/esg-technical-training-2850048659> for current dates.

## Vactor 2100i for Mechanics

### Objectives:

This three day class will give the mechanics basic operational information to confirm diagnosis and repair of the Vactor 2100i. We will discuss screens on the 2 Intuitouch displays, one in the cab and the other on the front hose reel. We will spend time in the classroom along with time in the hands-on lab. The lab time will consist of the disassembly and reassembly of the rodder pump and boom assembly used on the Vactor units. Mechanics will learn how to troubleshoot the rodder pump, hose reel, boom systems, vacuum systems (fan and blower), hydraulic, pneumatic and electrical/electronic systems using the Intelliview's diagnostic screens.

The mechanics will make a repair to the thermoplastic hose and learn how to test it. The mechanics will learn the proper use of the flow and pressure meters in the Intellevue screen for water system diagnosis. This class will provide a basic introduction to the electronic control systems. The mechanics must take this class before the Advanced class.

- Safety
- Understand the Hose Reel, Rodder Pump, and Boom Functions
- Basic Operation for Repair Confirmation
- Rodder Pump Rebuild
- Maintenance of the Vactor Unit
- Hydraulic component identification
- How to Manually override hydraulic and pneumatic functions
- Navigation of both Intuitouch Screens
- Intuitouch Screens for Diagnostic Assistance
- Introduction to Electrical Diagnosis
- Introduction and Navigation of the Service Cloud

**This In-Person class meets Tuesday through Thursday at 8:30 AM to 4:00 PM. Attendance at the entire session is required.**

Who should attend: New and experienced mechanics or supervisory personnel that need to have a better understanding of the Vactor 2100i repair procedures and recommendations.

See <https://www.eventbrite.com/o/esg-technical-training-2850048659> for current dates.



# TRUVAC HXX for Operators & Mechanics

## Objectives:

This three day class is designed to help operators and mechanics set up and maintain the TRUVAC HXX for best operation. Give mechanics operational information to confirm diagnosis, repair, maintenance and system troubleshooting. Engaging the hydraulics, water pump, and vacuum systems will be discussed with emphasis on safety, industry standards, best practices, proper operation, and maintenance. We will cover mechanical repairs and function, the hydraulic and electrical/electronic systems. We will spend time in the hands-on lab and the classroom.



Classes will include basic troubleshooting for systems related to hydro excavation, including the boom, the water end of the high pressure CAT pump, fan assembly, and performing a blower inspection. Discussion will include how to set the TRUVAC unit up for various applications.

Please provide your machine serial number for your HXX so the trainer can cover the attendee's specific model.

## HXX products discussed will include HXX, 824, and Prodigy

- Safety
- Pre-trip inspections
- Understand the CAT Water Pump, Alkota water heater, Body, and Boom Functions
- Digging nozzle selection and operation
- Filtration and Vacuum Systems - vacuum source (Fan or PD)
- Maintenance and the Maintenance Schedule
- Hydraulic Component Identification
- How to Manually Override Hydraulic and Pneumatic Functions
- Navigation of the IQAN/MD4 Intelliview Screens
- Electrical/Electronic Troubleshooting and Repair
- Introduction and Navigation of the Service Cloud

**This In-Person class meets Tuesday through Thursday at 8:30 AM to 4:00 PM. Attendance at the entire session is required.**

Who should attend: New and experienced operators, mechanics, supervisory, or demonstration personnel that need to have a better understanding of TRUVAC HXX operation, repair procedures, and recommendations.

See <https://www.eventbrite.com/o/esg-technical-training-2850048659> for current dates.





## Guzzler CL E for Mechanics

### Objectives:

This two day class will give mechanics operational information to confirm diagnosis, repair, maintenance and system troubleshooting. We will spend time in the hands-on lab and a lecture setting.



Mechanics will learn how to troubleshoot the boom systems, vacuum systems, hydraulic, pneumatic and electrical/electronic systems.

- Safety
- Understand Body and Boom Functions
- Basic Operation for Repair Confirmation
- Blower Operation
- Diagnose Vacuum Related Problems
- Maintenance and the Maintenance Schedule
- Hydraulic Component Identification
- How to Manually Override Hydraulic and Pneumatic Functions
- Electrical/Electronic Troubleshooting, Diagnostics and Repairs
- Introduction and Navigation of the Service Cloud

If any special option packages are needed, please inform at registration to ensure the material is covered:

**This In-Person class meets Tuesday through Wednesday at 8:30 AM to 4:00 PM. Attendance at the entire session is required.**

Who should attend: New and experienced mechanics that need to have a better understanding of the Guzzler repair procedures and recommendations.

See <https://www.eventbrite.com/o/esg-technical-training-2850048659> for current dates.

## Advanced 2100i Electronic Troubleshooting (Prerequisite Required - See Below)

### Objectives:

This three day class will give experienced technicians diagnostic information to perform troubleshooting and repairs to the Vactor 2100i electrical systems. We will review the hydraulic, pneumatic, and vacuum systems of the Vactor 2100i units. We will spend approximately half the time in the hands-on lab and the other half in a lecture setting.

The technician will learn how to troubleshoot the boom system, vacuum system, hydraulic and pneumatic systems using the Intelliview screens.

- Safety
- Navigation of both Intuitouch Screens
- Intuitouch Screens for Diagnostic Assistance
- Electrical/Electronic Troubleshooting, Diagnostics and Repairs
- CAN BUS Diagnostics
- How to use the Diagnostic Manual
- Using the Electrical Schematics to Compliment the Diagnostic Process

**This class meets Tuesday through Thursday at 8:30 AM to 4:00 PM. Attendance at the entire session is required.**

Who should attend: Technicians wanting to improve their ability to troubleshoot 2100i functions and electronic systems.

### Prerequisites:

Technicians must have completed the standard 2100i Mechanics class within the last 3 years before attending.

Note: This class will be offered only as In-Person Training at Vactor Manufacturing.

See <https://www.eventbrite.com/o/esg-technical-training-2850048659> for current dates.



# Request for Field Training for Elgin, Vactor, Guzzler, or TRUVAC Products

Field training can be requested for dealers or customers (end users) on all products. Mechanics training or a combination of operator/maintenance training is available.

The cost for field training is the same regardless of product. First day in a location is \$2500 per trainer, each additional day in the same location is \$1500 per trainer, plus trainer's expenses. Please discuss location with your Dealer and Vactor or Elgin Technical Training Department for approval.

Requests for Vactor operator training must be submitted through the dealer for our 2100i.

For the TRUVAC and Guzzler products, please contact your Regional Sales Representative, FS Solutions store, or go to <http://requestfieldtraining.eventbrite.com>.

The dealer must fill out the Request for Field Training form. All requests must be received a minimum of ninety (90) days before any requested date.

Register your request at the following:

<https://www.eventbrite.com/o/esg-technical-training-2850048659>

## Host's Responsibility:

- Responsible to register with our online registration program
- Obtain approved school start and completion dates from Technical Training department.
- Coordinate all matters concerning attendance
- Provide adequate meeting space for presentations using a screen and ensure writing space for all attendees, as agreed upon with Technical Training Department.
- Have a functional unit or units on-hand at training site for walkaround training sessions
- Provide presentation equipment (projector, screen, flip chart). Ensure meeting room is setup and maintained for duration of the meeting.
- Provide all refreshments and/or meals for attendees.
- Provide sign-in sheet of all attendees to trainer.

## Trainer's Responsibility:

- Provide presentation materials for video and projector presentation.
- Provide training manuals for each attendee. (Cost of manuals will be billed)

**Notice: Field Training requests will only be accepted as time and scheduling permits.**